

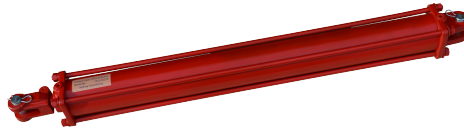


Hyflow Controls

Tie Rod & Welded Cylinders

Tie Rod Cylinders

Double Acting 2500PSI
Hard Chrome Plate Rods



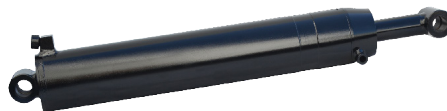
Part Number	Bore	Stroke	Mounts	Rod	Retracted	Extended	Ports	Pin Diameter	Weight
TR25-3008A	3"	8"	ASAE Clevis	1 1/4"	20-1/4"	28-1/4"	1/2" NPTF	1"	28 lbs
TR25-3508A	3.5"	8"	ASAE Clevis	1 1/4"	20-1/4"	28-1/4"	1/2" NPTF	1"	35 lbs
TR25-4008	4"	8"	Clevis	1 1/2"	18-1/4"	26-1/4"	1/2" NPTF	1"	41 lbs
TR25-4008A	4"	8"	ASAE Clevis	2 1/2"	20-1/4"	28-1/4"	1/2" NPTF	1"	42 lbs

Double Acting 3000PSI
Hard Chrome Plate Rods

Part Number	Bore	Stroke	Mounts	Rod	Retracted	Extended	Ports	Pin Diameter	Weight
TR30-2008	2"	8"	Clevis	1-1/8"	18-1/4"	26-1/4"	SAE 8	1"	18.3 lbs
TR30-2008A	2"	8"	ASAE Clevis	1-1/8"	20-1/4"	28-1/4"	SAE 8	1"	20.0 lbs
TR30-2016	2"	16"	Clevis	1-1/8"	26-1/4"	42-1/4"	SAE 8	1"	24.2 lbs
TR30-2016A	2"	16"	ASAE Clevis	1-1/8"	28-1/4"	44-1/4"	SAE 8	1"	25.8 lbs
TR30-2508	2-1/2"	8"	Clevis	1-1/8"	18-1/4"	26-1/4"	SAE 8	1"	20.0 lbs
TR30-2508A	2-1/2"	8"	ASAE Clevis	1-1/8"	20-1/4"	28-1/4"	SAE 8	1"	21.4 lbs
TR30-2512	2-1/2"	12"	Clevis	1-1/8"	22-1/4"	34-1/4"	SAE 8	1"	24.0 lbs
TR30-2520	2-1/2"	20"	Clevis	1-1/4"	30-1/4"	50-1/4"	SAE 8	1"	32.2 lbs
TR30-3008	3"	8"	Clevis	1-1/4"	18-1/4"	26-1/4"	SAE 8	1"	26.5 lbs
TR30-3008A	3"	8"	ASAE Clevis	1-1/4"	20-1/4"	28-1/4"	SAE 8	1"	28.2 lbs
TR30-3010	3"	10"	Clevis	1-1/4"	20-1/4"	30-1/4"	SAE 8	1"	30.2 lbs
TR30-3012	3"	12"	Clevis	1-1/4"	22-1/4"	34-1/4"	SAE 8	1"	32.4 lbs
TR30-3024	3"	24"	Clevis	1-1/2"	34-1/4"	58-1/4"	SAE 8	1"	48.0 lbs
TR30-3030	3"	30"	Clevis	1-1/2"	40-1/4"	70-1/4"	SAE 8	1"	55.4 lbs
TR30-3516	3-1/2"	16"	Clevis	1-1/2"	26-1/4"	42-1/4"	SAE 8	1"	43.2 lbs
TR30-3516A	3-1/2"	16"	ASAE Clevis	1-1/2"	31-1/4"	47-1/4"	SAE 8	1"	46.8 lbs
TR30-3524	3-1/2"	24"	Clevis	1-1/2"	34-1/4"	58-1/4"	SAE 8	1"	53.1 lbs
TR30-3530	3-1/2"	30"	Clevis	1-1/2"	40-1/4"	70-1/4"	SAE 8	1"	62.4 lbs
TR30-3536	3-1/2"	36"	Clevis	1-1/2"	46-1/4"	82-1/4"	SAE 8	1"	70.5 lbs
TR30-4036	4"	36"	Clevis	2"	46-1/4"	82-1/4"	SAE 8	1"	104 lbs

Welded Cylinders

Double Acting 3000PSI
Hard Chrome Plate Rods



Part Number	Bore	Stroke	Mounts	Rod	Retracted	Extended	Ports	Pin Diameter	Weight
WC30-3020	3"	20	Clevis	1-1/2"	30-1/4"	50-1/4"	SAE 8	1"	43.0 lbs
WC30-3024	3"	24	Clevis	1-1/2"	36-1/4"	58-1/4"	SAE 8	1"	48.0 lbs
WC30-3030	3"	30	Clevis	1-1/2"	40-1/4"	70-1/4"	SAE 8	1"	56.0 lbs
WC30-3524	3-1/2"	24	Clevis	1-3/4"	34-1/4"	58-1/4"	SAE 8	1"	59.0 lbs
WT30-3020	3"	20	Cross Tube	1-1/2"	30-1/4"	50-1/4"	SAE 8	1"	41.0 lbs
WT30-3024	3"	24	Cross Tube	1-1/2"	36-1/4"	58-1/4"	SAE 8	1"	46.0 lbs
WT30-3030	3"	30	Cross Tube	1-1/2"	40-1/4"	70-1/4"	SAE 8	1"	53.6 lbs
WT30-3524	3-1/2"	24	Cross Tube	1-3/4"	34-1/4"	58-1/4"	SAE 8	1"	57.3 lbs