

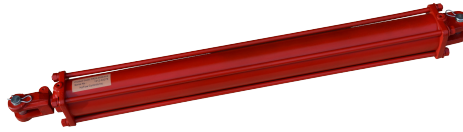


Hyflow Controls

Tie Rod & Welded Cylinders

Tie Rod Cylinders

Double Acting 2500PSI
Hard Chrome Plate Rods



Part Number	Bore	Stroke	Mounts	Rod	Retracted	Extended	Ports	Pin Diameter	Weight
TR25-2516	2.5"	16"	Clevis	1-1/8"	26-1/4"	42-1/4"	3/8" NPTF	1"	29 lbs
TR25-3008A	3"	8"	ASAE Clevis	1 1/4"	20-1/4"	28-1/4"	1/2" NPTF	1"	28 lbs
TR25-3508A	3.5"	8"	ASAE Clevis	1 1/4"	20-1/4"	28-1/4"	1/2" NPTF	1"	35 lbs
TR25-4008	4"	8"	Clevis	1 1/2"	18-1/4"	26-1/4"	1/2" NPTF	1"	41 lbs

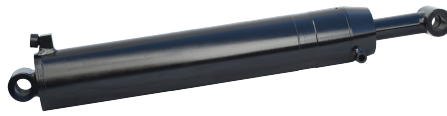
Double Acting 3000PSI
Hard Chrome Plate Rods

Part Number	Bore	Stroke	Mounts	Rod	Retracted	Extended	Ports	Pin Diameter	Weight
TR30-2008	2"	8"	Clevis	1-1/8"	18-1/4"	26-1/4"	SAE 8	1"	18.3 lbs
TR30-2008A	2"	8"	ASAE Clevis	1-1/8"	20-1/4"	28-1/4"	SAE 8	1"	20.0 lbs
TR30-2010	2"	10"	ASAE Clevis	1-1/8"	20-1/4"	30-1/4"	SAE 8	1"	19.0 lbs
TR30-2012	2"	12"	Clevis	1-1/8"	22-1/4"	34-1/4"	SAE-8	1"	22.0 lbs
TR30-2016	2"	16"	Clevis	1-1/8"	26-1/4"	42-1/4"	SAE 8	1"	24.2 lbs
TR30-2016A	2"	16"	ASAE Clevis	1-1/8"	28-1/4"	44-1/4"	SAE 8	1"	25.8 lbs
TR30-2020	2"	20"	Clevis	1-1/8"	30-1/4"	50-1/4"	SAE 8	1"	28.0 lbs
TR30-2024	2"	24"	Clevis	1-1/8"	34-1/4"	58-1/4"	SAE 8	1"	32.0 lbs
TR30-2030	2"	30"	Clevis	1-1/8"	40-1/4"	70-1/4"	SAE 8	1"	35.0 lbs
TR30-2504	2.5"	4"	Clevis	1-1/8"	14-1/4"	18-1/4"	SAE 8	1"	17.0 lbs
TR30-2506	2.5"	6"	Clevis	1-1/8"	16-1/4"	22-1/4"	SAE 8	1"	19.0 lbs
TR30-2508	2.5"	8"	Clevis	1-1/8"	18-1/4"	26-1/4"	SAE 8	1"	20.0 lbs
TR30-2508A	2.5"	8"	ASAE Clevis	1-1/8"	20-1/4"	28-1/4"	SAE 8	1"	21.4 lbs
TR30-2510	2.5"	10"	Clevis	1-1/8"	20-1/4"	30-1/4"	SAE 8	1"	22.0 lbs
TR30-2512	2.5"	12"	Clevis	1-1/8"	22-1/4"	34-1/4"	SAE 8	1"	24.0 lbs
TR30-2514	2.5"	14"	Clevis	1-1/4"	24-1/4"	38-1/4"	SAE 8	1"	27.0 lbs
TR30-2516	2.5"	16"	Clevis	1-1/4"	26-1/4"	42-1/4"	SAE 8	1"	29.0 lbs
TR30-2520	2.5"	20"	Clevis	1-1/4"	30-1/4"	50-1/4"	SAE 8	1"	32.2 lbs
TR30-3006	3"	6"	Clevis	1-1/4"	16-1/4"	22-1/4"	SAE 8	1"	23.0 lbs
TR30-3008	3"	8"	Clevis	1-1/4"	18-1/4"	26-1/4"	SAE 8	1"	26.5 lbs
TR30-3008A	3"	8"	ASAE Clevis	1-1/4"	20-1/4"	28-1/4"	SAE 8	1"	28.2 lbs
TR30-3010	3"	10"	Clevis	1-1/4"	20-1/4"	30-1/4"	SAE 8	1"	30.2 lbs
TR30-3012	3"	12"	Clevis	1-1/4"	22-1/4"	34-1/4"	SAE 8	1"	32.4 lbs
TR30-3014	3"	14"	Clevis	1-1/2"	24-1/4"	38-1/4"	SAE 8	1"	35.0 lbs
TR30-3024	3"	24"	Clevis	1-1/2"	34-1/4"	58-1/4"	SAE 8	1"	48.0 lbs
TR30-3030	3"	30"	Clevis	1-1/2"	40-1/4"	70-1/4"	SAE 8	1"	55.4 lbs
TR30-3510	3.5"	10"	Clevis	1-1/2"	20-1/4"	30-1/4"	SAE 8	1"	36.0 lbs
TR30-3512	3.5"	12"	Clevis	1-1/2"	22-1/4"	34-1/4"	SAE 8	1"	43.0 lbs
TR30-3514	3.5"	14"	Clevis	1-1/2"	24-1/4"	38-1/4"	SAE 8	1"	46.0 lbs
TR30-3516	3.5"	16"	Clevis	1-1/2"	26-1/4"	42-1/4"	SAE 8	1"	43.2 lbs
TR30-3516A	3.5"	16"	ASAE Clevis	1-1/2"	31-1/4"	47-1/4"	SAE 8	1"	46.8 lbs

Part Number	Bore	Stroke	Mounts	Rod	Retracted	Extended	Ports	Pin Diameter	Weight
TR30-3518	3.5"	18"	Clevis	1-1/2"	28-1/4"	43-1/4"	SAE 8	1"	51.0 lbs
TR30-3524	3.5"	24"	Clevis	1-1/2"	34-1/4"	58-1/4"	SAE 8	1"	53.1 lbs
TR30-3530	3.5"	30"	Clevis	1-1/2"	40-1/4"	70-1/4"	SAE 8	1"	62.4 lbs
TR30-3536	3.5"	36"	Clevis	1-1/2"	46-1/4"	82-1/4"	SAE 8	1"	70.5 lbs
TR30-4008A	4"	8"	Clevis	1-3/4"	18-1/4"	26-1/4"	SAE 8	1"	43.0 lbs
TR30-4012	4"	12"	Clevis	1-1/2"	22-1/4"	34-1/4"	SAE 8	1"	48.0 lbs
TR30-4016	4"	16"	Clevis	1-3/4"	26-1/4"	42-1/4"	SAE 8	1"	61.0 lbs
TR30-4018	4"	18"	Clevis	1-3/4"	28-1/4"	46-1/4"	SAE 8	1"	61.0 lbs
TR30-4020	4"	20"	Clevis	1-3/4"	30-1/4"	50-1/4"	SAE 8	1"	67.0 lbs
TR30-4024	4"	24"	Clevis	2"	34-1/4"	58-1/4"	SAE 8	1"	79.0 lbs
TR30-4030	4"	30"	Clevis	2"	40-1/4"	70-1/4"	SAE 8	1"	92.0 lbs
TR30-4036	4"	36"	Clevis	2"	46-1/4"	82-1/4"	SAE 8	1"	104.0 lbs

Welded Cylinders

Double Acting 3000PSI
Hard Chrome Plate Rods



Part Number	Bore	Stroke	Mounts	Rod	Retracted	Extended	Ports	Pin Diameter	Weight
WC30-2548	2.5"	48"	Clevis	1-1/2"	58-1/4"	82-1/4"	SAE-8	1"	49.0 lbs
WC30-3020	3"	20"	Clevis	1-1/2"	30-1/4"	50-1/4"	SAE 8	1"	43.0 lbs
WC30-3024	3"	24"	Clevis	1-1/2"	36-1/4"	58-1/4"	SAE 8	1"	48.0 lbs
WC30-3024-0	3"	24"	Clevis	1-1/2"	34-1/4"	58-1/4"	SAE 8	1"	48.0 lbs
WC30-3030	3"	30"	Clevis	1-1/2"	40-1/4"	70-1/4"	SAE 8	1"	56.0 lbs
WC30-3524	3-1/2"	24"	Clevis	1-3/4"	34-1/4"	58-1/4"	SAE 8	1"	59.0 lbs
WC30-4024	4"	24"	Clevis	1-3/4"	34-1/4"	58-1/4"	SAE 8	1"	71.0 lbs