



# LG SERIES TECHNICAL INFORMATION



## PRODUCT OVERVIEW

- Lightweight & Compact: Weighs ~50 lbs, ideal alternative to traditional dump pumps
- Models Available: Single or dual pressure
- Dual model includes internal dual-purpose relief valve & built-in airline
- Airshifts included
- 2-year warranty
- Compatible with manual & automatic transmissions

## TECHNICAL DATA

- Shifter: Pneumatic control
- Relief Valve (Standard): 2500 PSI
- Dual Pressure Relief Valve:  
Low side: 2500 PSI  
High side: 3000 PSI
- Rotation Speed:  
Max: 2000 RPM  
Min: 500 RPM

### Pump Models:

LG22: 5.0 CID, 22 GPM @ 1000 RPM

LG27: 6.2 CID, 27 GPM @ 1000 RPM

- Port Sizes:

Inlet: 1-1/4" NPTF

Pressure (Cylinder): 1" NPTF

Return (Tank): 1" NPTF

## MODEL CODE

**LG 27 D B4 R 25 N16**

LG = SERIES

22: 5.0 CID, 22GPM @1000 RPM  
27: 6.2 CID, 27GPM @1000 RPM

D = Dual Pressure  
S = Single Pressure

N16 = 1" NPT Ports  
S16 = #16 ORB Ports

25 = 2500PSI  
2530 = 2500/3000PSI

R = CW (Right) Rotation  
L = CCW (Left) Rotation

B4 = SAE B 4 Bolt Flange, 7/8"-13 Tooth Shaft  
D4 = 4 Bolt Flange, DIN 5462, 8 Tooth Shaft  
S4 = SAE B 4 Bolt Flange, 1"-15 Tooth Shaft

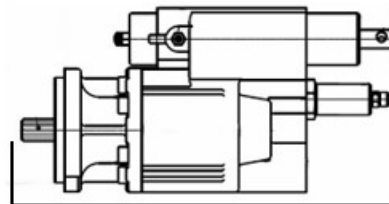
## PUMP DIMENSIONS

A (Length): 16.38"

C (Flange Width): 4.70"

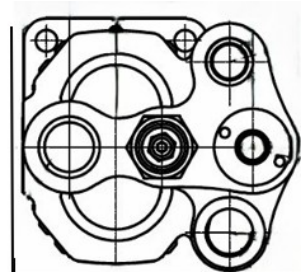
B (Width): 7.0"

D (Flange Bolt Hole C-C): 3.5"

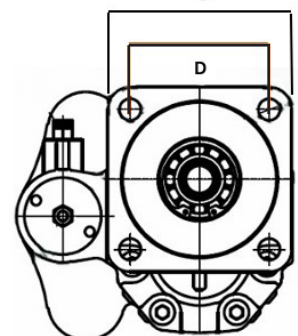


A

C



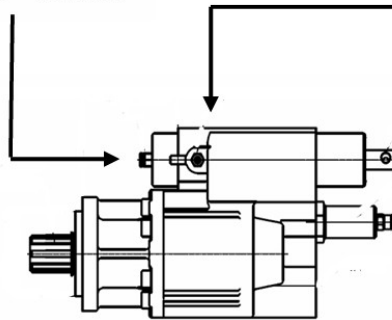
B



# AIR LINE INSTALLATION GUIDE

90 DEGREE  
FITTING = LOWER

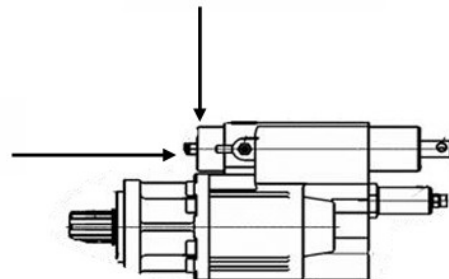
STRAIGHT FITTING IN  
HOUSING = RAISE



Single Pressure

LOWER PORT 90  
DEGREE FITTING

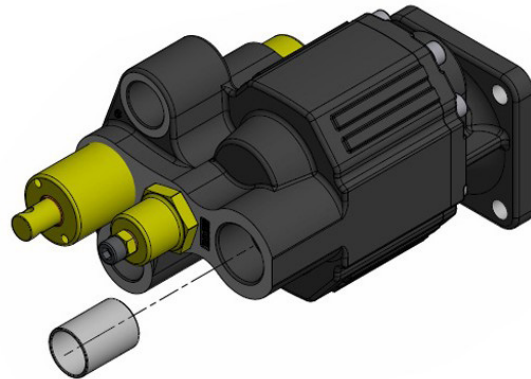
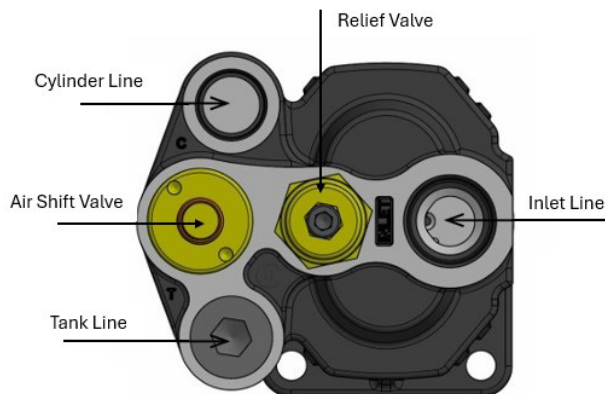
RAISE PORT STRAIGHT  
FITTING IN HOUSING



DUAL PRESSURE

AIRLINE  
FITTING IN  
PRESSURE  
VALVE

## PORT LOCATIONS



# AIR LINE INSTALLATION GUIDE

**Basic Installation Instructions:** Make sure that the dump bed is down and that the vehicle is in a locked position. Refer to PTO/Truck/Body manufacturer guidelines for PTO connections. Before engaging the PTO, confirm that the Dump Pump has a sufficient and unblocked oil supply. The PTO should be properly disengaged before lowering the bed and moving the vehicle.

**Single Pressure Pump:** For use on dump applications only. Do not exceed 2500 PSI.

**Dual Pressure Pump:** For use on dump/walking floor applications. Do not exceed 2500 PSI on the low side and 3000 PSI on the high side.

**2 Line Installation:** Install 1-1/4" hose into the Inlet port. **DO NOT INSTALL SLEEVE IN THE INLET PORT.** This is for a 3 line application only. Plug the tank (return) port. **DO NOT USE** Teflon Tape on any fittings. Liquid pipe sealant is recommended. **DO NOT** overtighten fittings. This could result in cracking in the housing around the fittings and cause pump failure.

**3 Line Installation:** Install the sleeve in the Inlet port. Install 1-1/4" hose into the Inlet port. Install 1" hose into the tank (return) port. **DO NOT USE** Teflon Tape on any fittings. Liquid pipe sealant is recommended. **DO NOT** overtighten fittings. This could result in cracking in the housing around the fittings and cause pump failure.

**NOTE:** It is always recommended to use a 3 line install.

**Things to Remember:** Always use the correct size hoses, 1-1/4" Suction, 1" Tank and Cylinder lines. Improper hose size could result in cavitation and pump failure, as well as causing the bed to rise unexpectedly. Make sure there are no restrictions to flow and that a diffuser must be installed in the return line if the tank does not have an internal baffle. Make sure the tank connections are below the minimum fluid level once the dump cylinder has been fully extended. Inspect the pump and all fittings for leaks after installation is complete.

## CONTACT US

**CORPORATE**  
2134 S Green Privado  
Ontario, CA 91761  
1(866)865-8889

**GEORGIA**  
241 Industrial Park Rd  
Baldwin, GA 30511  
(706)686-4199

**CANADA**  
7031 68 Ave NW  
Edmonton AB T6B-E3E  
1(587)635-4537